



System Loco.

## Quick Start Guide

# LocoTag C2PL.



---

# Introduction.

## How the System Works

The LocoTag C2PL has been developed to work alongside System Loco tracking and monitoring devices. The LocoTag C2PL can accurately log thermocouple readings and communicate these readings to LocoAware via LocoTrack devices. The LocoTag C2PL stores temperature and humidity readings to local memory. When in range of a LocoTrack device, the data is read and communicated to our LocoServer for storage, visualisation and analysis.

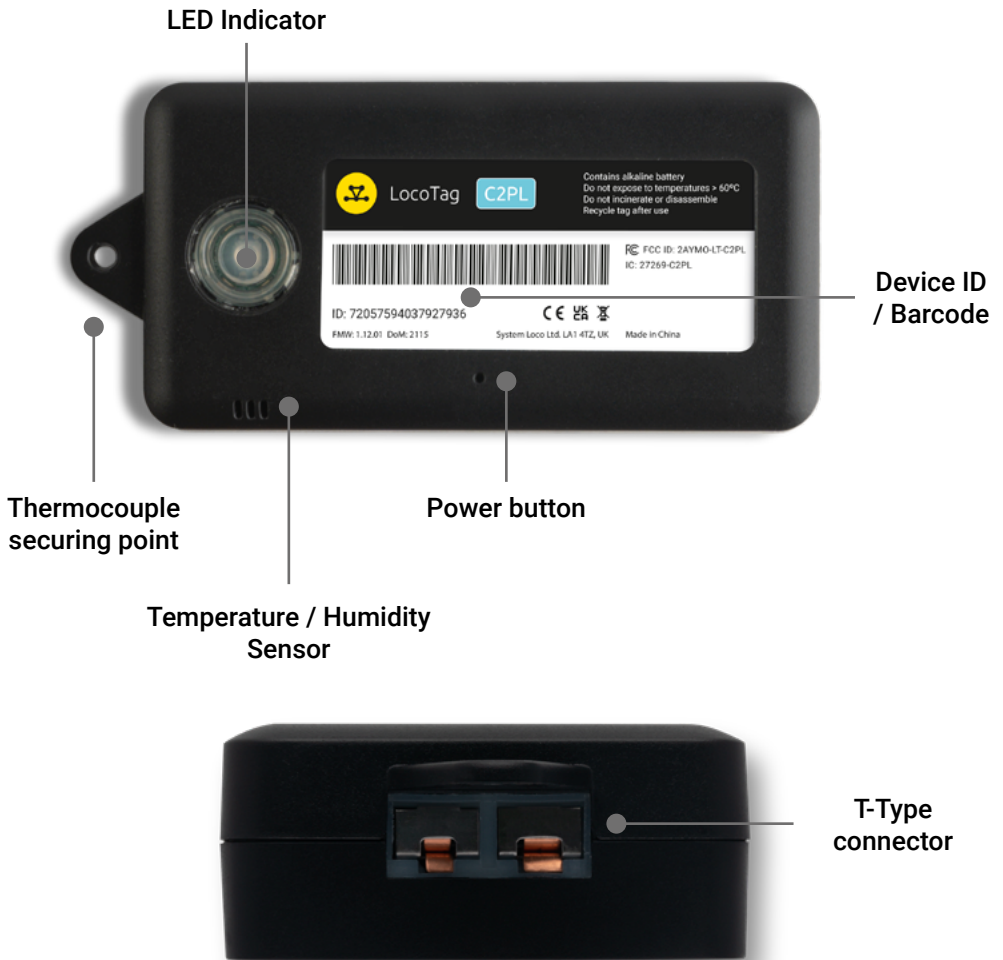
LocoAware enables you to view historical data and easily configure system level behaviour based upon events such as C2PL temperature values for different business needs. The same controls are accessible to 3rd party applications via JSON API to the Loco server.



*To use the C2PL you will need the following equipment:*

- A System Loco hub/reader device:  
LTR-HGR4, LTR-HFR4, LTP-HGD4, LTP-HGC4 or LTP-HGP4
- A C2PL
- T-Type thermocouple probe

# Device Characteristics.



Step 1

## Turn on the LocoTag C2PL



 *The Power Button can be found in the middle of the device as seen above.*

To initiate power on/off functions, apply sustained pressure (>2 seconds) using a paper clip or pin into the designated aperture.

The LED indicator beneath the transparent button will illuminate green to signify activation or red to denote deactivation of the device.

A brief depression of the button (<1 second) confirms the device's current state. The LED beneath the transparent button will illuminate green to indicate operational status or red to signal standby mode.



## Step 2

Each LocoTag C2PL has a unique identifier that is presented as a number and a barcode on its label.



*Fig 1. An image of the LocoTag C2PL with the device ID and barcode highlighted.*

Association is completed by scanning this barcode and entering a name for the asset on the LocoAware platform. Once associated, the LocoAware platform allows a user to search for a specific asset by asset name or by device ID.

If you have an API integration with the LocoAware platform, you may have an alternative method of associating the LocoTag C2PL with the desired asset (such as a mobile app or existing device/scanning unit). Consult your administrator for more information.

If you require a comprehensive asset tooling, including reporting, maintenance scheduling and more, contact your sales representative about the System Loco Track Application which extends the LocoAware platform functionality.

---

# Getting Started - in the Field.

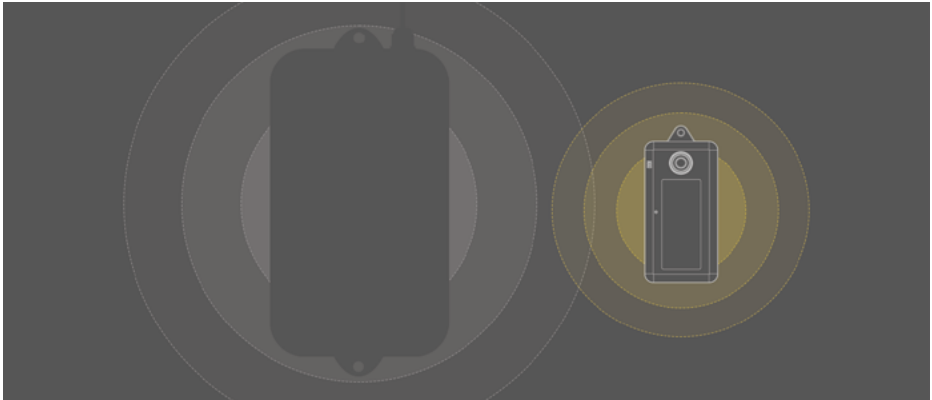
## Step 1

### Activation

After activating the C2PL, establishing association between the LocoTag C2PL and a hub/reader completes the setup process.

## Step 2

### Bring the device within range of a LocoTrack enabled device



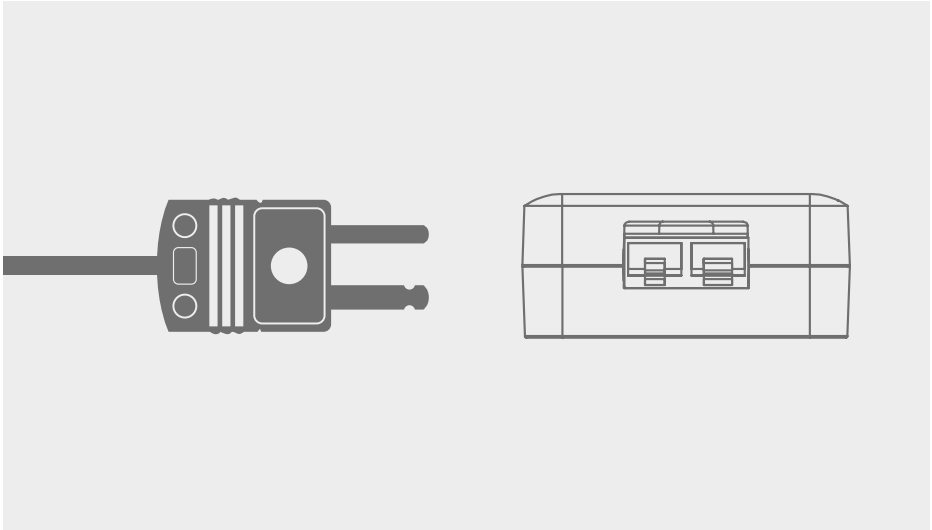
A LocoTrack device can be enabled as a hub depending on its device profile setting / use case.

The LocoTag C2PL has a range of:

- 20m (65.6ft) indoors
- 80m (262.5ft) outdoors

**Step 3**

## Taking a reading

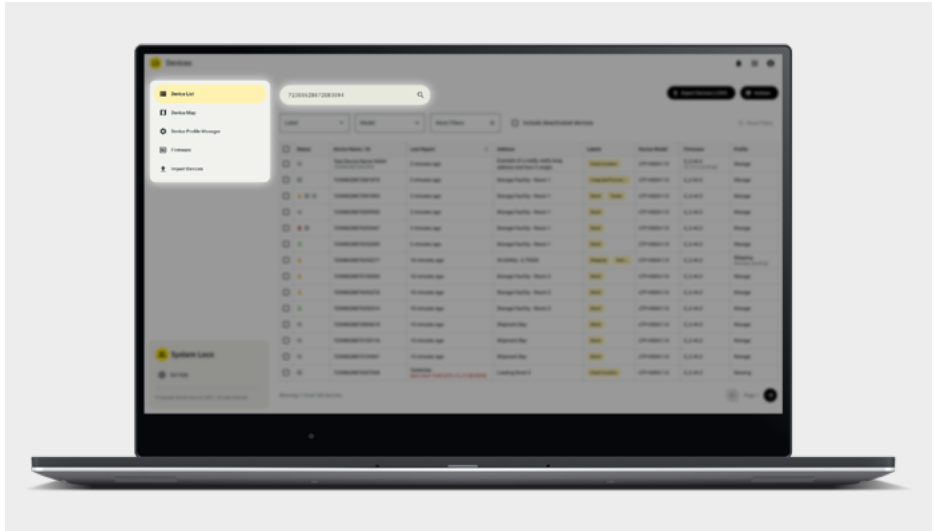


To obtain a temperature reading, simply insert the T-Type thermocouple probe into the designated T-Type connector.

For added stability, utilize the small lug available to securely fasten the probe to the C2PL using either a screw or a cable tie.

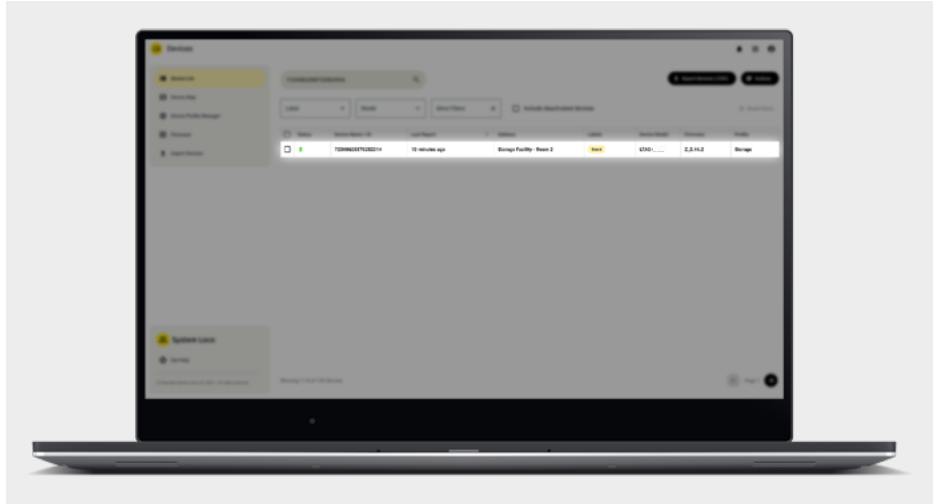
**Step 4**

**Confirm on LocoAware that the device has reported to the server**

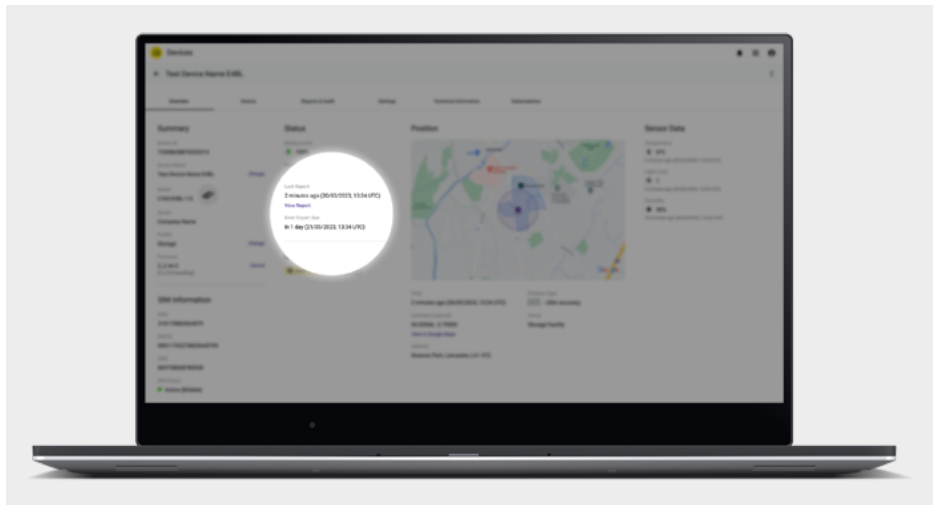


Find your device on [www.locoaware.com](http://www.locoaware.com) by entering the Device ID / Barcode number into the search field.





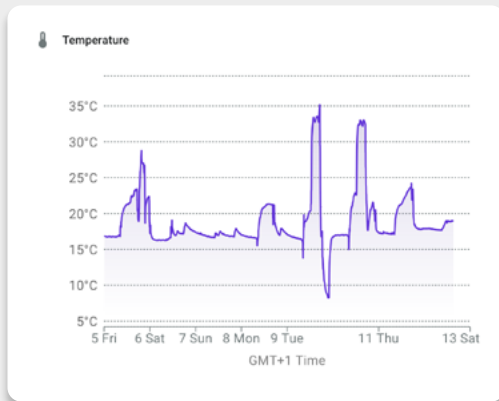
Select the device from the list of search results.



Confirm that the last report time is current with the device's details page.

Step 5

## Monitor the device



Monitor the device from within the LocoAware platform or via the API if integration has been completed.

The device will report back to the LocoAware platform whenever it comes into range of an enabled LocoTrack device.



For information on API integration please visit:  
<https://locoaware.com/apidocs/index>

---

## Batteries.

The unit uses a 3x AAA Alkaline Batteries (non-rechargeable)

- Do not expose to temperatures >55°C (131°F)
- Do not incinerate or disassemble
- Recycle after use

## Certifications.

### Countries

This product has been certified to the following standards:

FCC, UKCA, RCM, ANATEL, IC/ISED, SUBTEL, CE, RoHS, WEEE, OFCA, WPC, Giteki, NOM/NYCE/IFETEL, IMDA, KC, NCC, NBTC

## Environmental Considerations.

The equipment may contain substances that are harmful to the environment or human health. Please recycle this unit appropriately. Please contact your local authority for disposal or recycling information.