



System Loco.

Quick Start Guide

LocoTrack HGR4.



Introduction.

How the System Works

The LocoTrack Rechargeable HGR4 is designed for supply chain applications. It provides location reporting as well as monitoring and logging accurate temperature, light, movement, tip, impact and shock levels. It will regularly report its location, upload sensor logs. This cycle is continuous unless the sensors cross configurable thresholds, upon which the device will send an additional 'alert report' regarding its condition. To ensure that the latency of alerting is low, sensors are monitored every 10 seconds. The device can be configured remotely, with defaults for multiple industries or can be configured in detail for specific needs.

In addition to providing standalone protection, the LocoTrack Rechargeable HGR4 is interoperable with other Loco products. As such, the LocoTrack HGR4 Rechargeable can read data from LocoTags, and act as a gateway to communicate tag data.

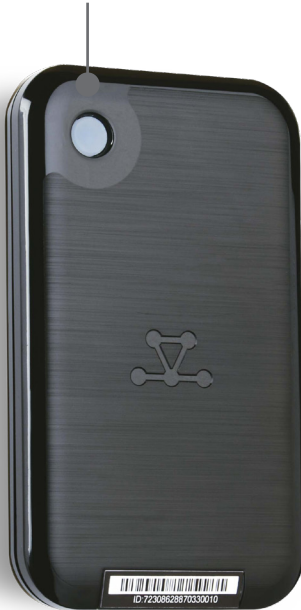
Installation and Asset Association

LocoTrack Rechargeable HGR4 is provided pre-configured with default settings. All that is required is to turn on the device, and associate the device with the asset/consignment it is being attached to. To simplify this association process, each LocoTrack Rechargeable HGR4 has a unique identifier that is presented as a number and a barcode on its label.

Association is completed by scanning this barcode and entering a name for the asset on the LocoAware platform. Once associated, the LocoAware platform allows a user to search for a specific asset by asset name or by device ID.

Device Characteristics.

Power Button / LED / Light Sensor



Device ID / Barcode




Certifications / Info Label

LocoTrack HGR4 Operation.

Turn on the HGR4



 *The button and LED light are on the face of the device in the top-right corner*

Press the button to turn the device on. The green light indicates the device is on and working properly. The LocoTrack HGR4 will gather and communicate data according to the profile you have created and assigned to it.

Depending on how your administrator has configured the device's button behaviour; typically:

- a) A button press will cause the light to flash green to indicate that it is on
- b) If your administrator has disabled the button, no lights will flash

If the administrator has configured the button as an on-off toggle button:

- a) Green indicates the device has been turned on
- b) Red indicates the device has been turned off

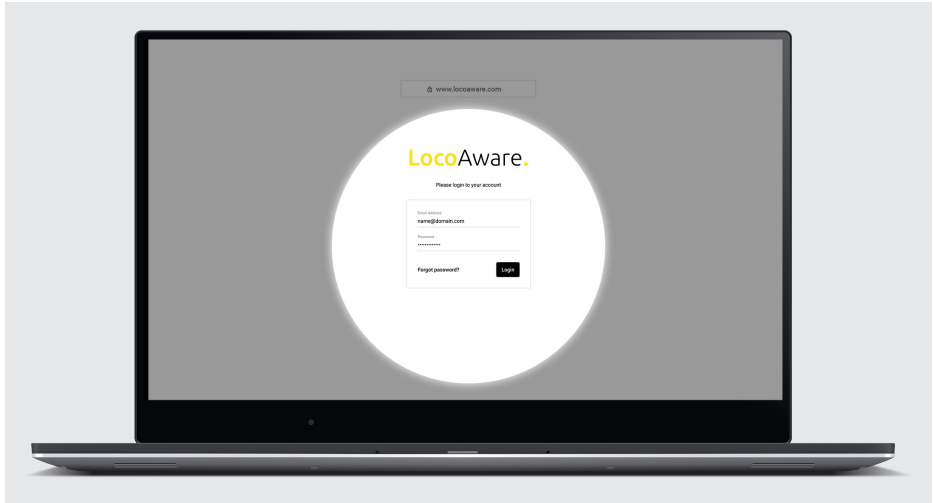
Re-use the HGR4

The HGR4 is a rechargeable, multi-use device. After use it can be easily recharged using off-the-shelf 10W Qi wireless chargers.



Getting Started - at HQ.

Step 1



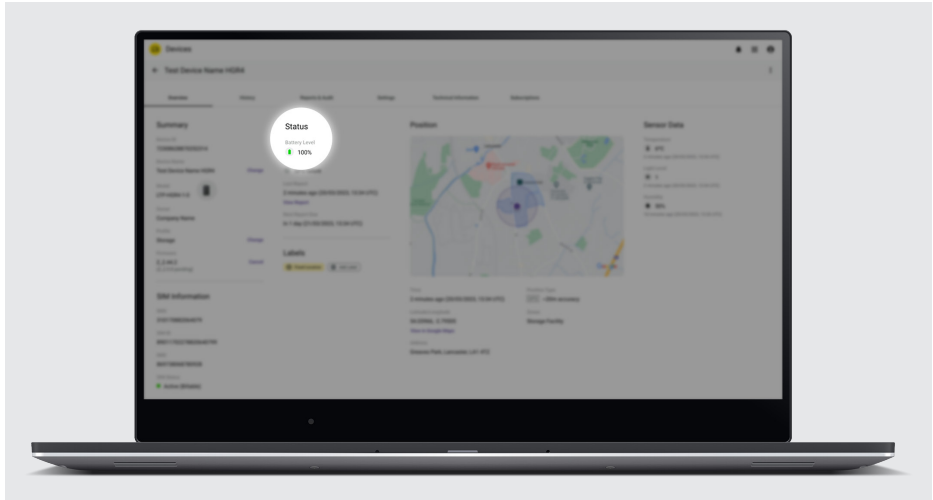
Access LocoAware (www.locoaware.com) and login with the credentials provided to your company's administrator.

Step 2

Once you have logged in, please create suitable profiles for how you intend to use your devices.



For help with creating device profiles, please see our Knowledge Base article here: <https://systemloco.zendesk.com/hc/en-us/articles/360017778920-Profiles>

Step 3

Before you send your device out into the field, ensure that the device has sufficient charge. You can monitor the level of charge on www.locoaware.com – 10 hours on a 5W charger is sufficient to charge the device to 80% from a flat battery.



We recommend to recharge the device in-between every use to prolong the battery life

Getting Started - in the Field.

When you're ready to use the device, turn it on and attach it to your asset/shipment.

Step 1



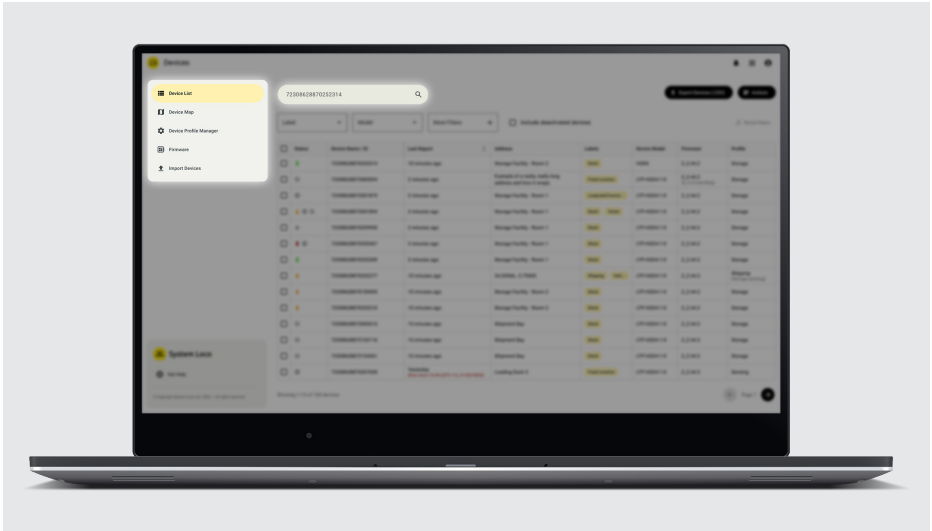
Press the power button to turn on the device. The green light means it has turned on.



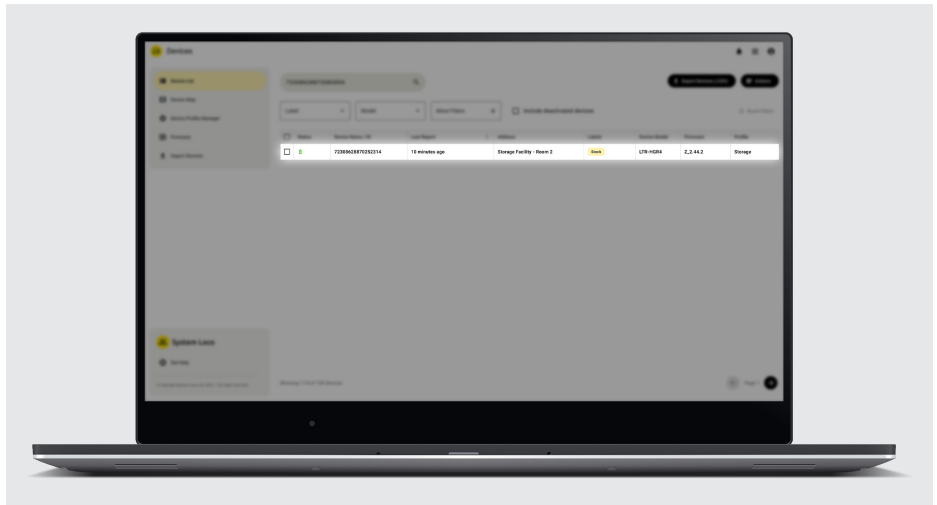
If your administrator has disabled the button, no lights will flash

Step 2

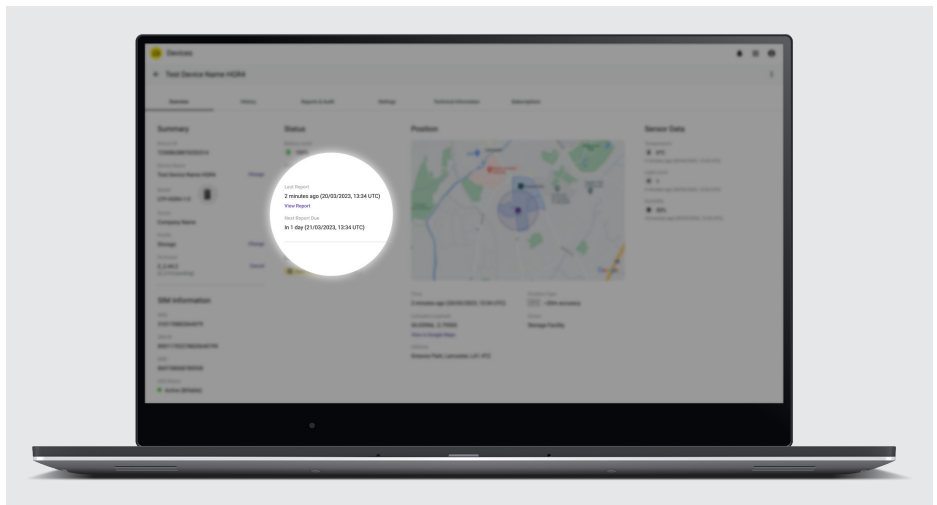
Confirm on LocoAware that the device has reported to the server



Find your device on www.locoaware.com by entering the Device ID / Barcode number into the search field.



Select the device from the list of search results.



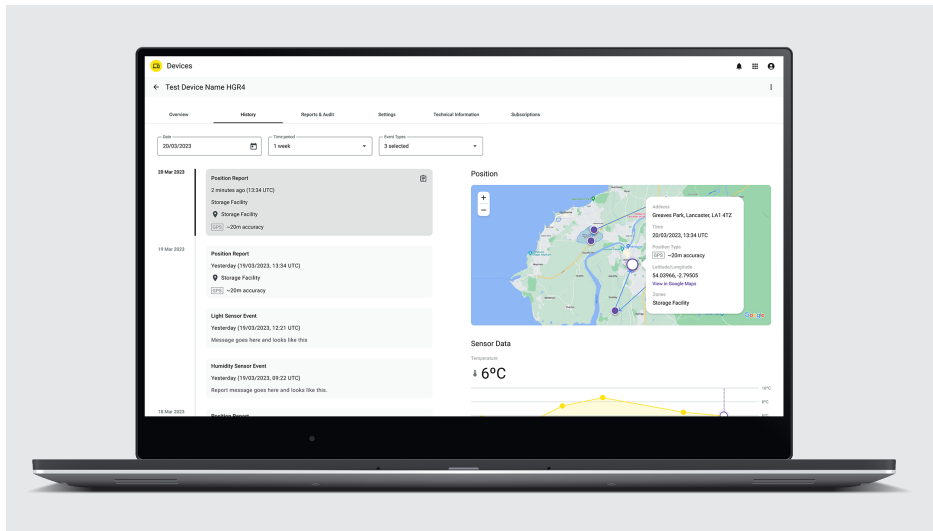
Confirm that the last report time is current with the device's details page.

Step 3**Attach the device to an asset or shipment**


The LocoTrack HGR4 can be attached to a single asset or placed inside a box with multiple assets, the choice is yours. Doing so will allow you to track the location and condition of your assets every time the LocoTrack HGR4 reports to the server; giving you complete visibility of your assets, whether they're on the move or stationary.

Step 4

Monitor the device



You may monitor the device and the information it reports from within the LocoAware platform. You may use your own platform if API integration has been completed.

 For information on API integration please visit:
<https://locoaware.com/apidocs/index>

Certifications.

Countries

This product has been certified to the following standards:

FCC, IC, CE, UKCA, ROHS, PTCRB, MIC, KC, NCC, ANATEL, NOM, IFETEL, RAMATEL, RCM, RAMATEL

Airlines

RU, AC, CA, UX, AF, NZ, AS, NH, AA, M6, OZ, 50, 5Y, AV, SN, 5C, CV, C8, CX, CI, EK, EY, BR, HX, QX, KL, KE, LA, M3, LK, MH, KZ, PT, PO, QR, OO, WN, TP, TK, UA

Safety Statements.

Human Exposure Compliance Statement

Pursuant to 47 CFR § 24.52 of the FCC Rules and Regulations, personal communications services (PCS) equipment is subject to the radio frequency radiation exposure requirements specified in § 1.1307(b), § 2.1091 and § 2.1093, as appropriate.

System Loco certifies that it has determined that the LocoTrack Rechargeable complies with the RF hazard requirements applicable to the broadband PCS equipment operating under the authority of 47 CFR Part 24, Subpart E of the FCC Rules and Regulations. This determination is dependent upon installation, operation and use of the equipment in accordance with all instructions provided.

The LocoTrack Rechargeable is designed for and intended to be used in fixed and mobile applications.

“Fixed” means that the device is physically secured at one location and is not able to be easily moved to another location. “Mobile” means that the device is designed to be used in other than fixed locations and generally in such a way that a separation distance of at least 20 cm is normally maintained between the transmitter’s antenna and the body of the user or nearby persons. The LocoTrack Rechargeable is not designed for or intended for use in applications within 20 cm of the body of the user and such uses are strictly prohibited.

To ensure that the LocoTrack Rechargeable complies with current FCC regulations limiting both maximum RF output power and human exposure to radio frequency radiation, a separation distance of at least 20 cm must be maintained between the unit’s antenna and the body of the user and any nearby persons at all times and in all applications and uses.

FCC Rules and Industry Canada (IC) regulatory information

Compliance Statement (Part 15.19)

The equipment device complies with Part 15 of the FCC Rules. Operation is subject to the following two conditions: (1) This device may not cause harmful interference, and (2) This device must accept any interference received including interference that may cause undesired operation.

Warning (Part 15.21)

Changes or modifications not expressly approved could void the user's authority to operate the equipment. Manufacturer is not responsible for any radio or TV interference caused by unauthorized modifications to this equipment.

Compliance Statement (Part 15.105(b))

Note: This equipment has been tested and found to comply with the limits for a Class B digital device, pursuant to part 15 of the FCC Rules. These limits are designed to provide reasonable protection against harmful interference in a residential installation.

This equipment generates, uses and can radiate radio frequency energy and, if not installed and used in accordance with the instructions, may cause harmful interference to radio communications. However, there is no guarantee that interference will not occur in a particular installation. If this equipment does cause harmful interference to radio or television reception, which can be determined by turning the equipment off and on, the user is encouraged to try to correct the interference by one or more of the following measures:

Reorient or relocate the receiving antenna

Increase the separation between the equipment and receiver

Consult the dealer or an experienced radio/TB technician for help.

This device complies with Industry Canada license-exempt RSS standard(s). Operation is subject to the following conditions: (1) this device may not cause interference, and (2) this device must accept any interference, including interference that may cause undesired operation of the device.

Le présent appareil est conforme aux CNF d'Industrie Canada applicables aux appareils radioexempts de licence. L'exploitation est autorisée aux deux conditions suivantes:

(1) l'appareil n' doit pas produire de brouillage, et (2) l'utilisateur de l'appareil doit accepter tout brouillageradioélectrique subi, même si le brouillage est susceptible d'en compromettre le fonctionnement.

Class B digital device notice
"CAN ICES-3 (B)/NMB-3(B)"

RF Radiation Exposure Statement

This equipment complies with FCC radiation exposure limits set fourth for mobile transmitting devices operation in an uncontrolled environment. End users must follow the specific operating instructions to satisfy RF exposure compliance. The equipment should only be used where there is normally at least 20cm separation between the antenna and all person/user.

This transmitter must not be co-located or operation in conjunction with any other antenna or transmitter.

Any changes or modification not expressly approved by the party responsible for compliance could void the user's authority to operate this equipment.

Mexico

IFETEL RTICASC17-1153

"La operación de este equipo está sujeta a las siguientes dos condiciones: (1) es posible que este equipo o dispositivo no cause interferencia perjudicial y (2) este equipo o dispositivo debe aceptar cualquier interferencia, incluyendo la que pueda causar su operación no deseada."

Taiwan

取得審驗證明之低功率射頻器材，非經核准，公司、商號或使用者均不得擅自變更頻率、加大功率或變更原設計之特性及功能。低功率射頻器材之使用不得影響飛航安全及干擾合法通信；經發現有干擾現象時，應立即停用，並改善至無干擾時方得繼續使用。前述合法通信，指依電信管理法規定作業之無線電通信。低功率射頻器材須忍受合法通信或工業、科學及醫療用電波輻射性電機設備之干擾。

電磁波警語：減少電磁波影響，請妥適使用。

A-GPS警語：為維護隱私權，請妥適使用。

