



LocoTrack Primary HGC4



Product Highlights.

- Multitile transits enabled prior to disposal
- Provides up to two years of asset tracking
- WiFi, LTE-CatM & 2G comms
- NIST traceable temperature sensor
- Detects LocoTags
- Can beacon as a LocoTag
- Waterproof

How the system works.

LocoTrack Primary HGC4 is a non-rechargeable battery-operated device designed for supply chain, asset tracking – OTR, Rail, Air or Ocean as well as various under roof applications. The LocoTrack Primary HGC4 provides location reporting as well as monitoring accurate temperature (NIST traceable), movement, and also reports any LocoTag information that is within reporting range.

The LocoTrack Primary HGC4 will regularly report its location, upload sensor data and is capable of being remotely controlled for shut off commands. The LocoTrack Primary HGC4 is platform configurable, predicated on use-case requirements; it can operate for up to two years.

In addition to providing standalone protection and visibility, the LocoTrack Primary HGC4 is interoperable with other Loco products. As such, the LocoTrack Primary HGC4 can read LocoTags and act as a hub to communicate LocoTag data. It can also beacon as a LocoTag and be discovered locally via BLE.

Installation and asset association.

The LocoTrack Primary HGC4 is pre-configured with default settings. All that is needed is to turn on the device and associate the device with the asset or shipment to which it is attached. To simplify this association process, each LocoTrack Primary HGC4 has a unique identifier that is presented as a number and a barcode on its label. Association is completed by scanning this barcode and entering details regarding the asset or shipment. This can be completed directly on LocoAware. Once associated, LocoAware allows the user to search for a specific asset or shipment.

Design considerations.

The system has been developed with end to end security in mind and protection against replay and masquerade attacks.

Each LocoTrack Primary HGC4 has a unique key programmed at manufacture and all communication is authenticated and restricted to Loco servers. Communication can be completed over cellular or via pre-configured WiFi access points.



Technical Specifications.

Remote Communication

Worldwide LTE Cat M1/Cat NB1/EGPRS coverage 802.11b/g/n

Positioning

Loco Hybrid Positioning Engine, with locations from A-GPS, visible cell towers and WiFi access points

LocoTag Reporting

Range	20m (indoors) 80m (outdoors)
Number of tags	Up to 2,000 tags per HGC4
Reporting level	Factory configurable

Power Consumption

Sleep	0.004 mA (average)
Reporting	125 mA (average)

Battery

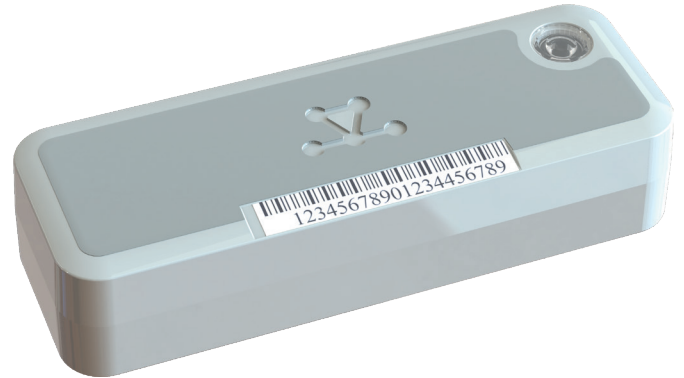
4 x Maxell LR14 Alkaline C 4 Ah capacity at 6V DC

Mechanical Charecteristics

Dimensions (LxWxH)	141.1 x 57.0 x 36.1 mm
Weight	325 gr
Material	PC+ABS
Colour	White

Environmental

IP rating	67 (Pending)
Storage temperature	5 to 30°C
Operating temperature	-20 to 54°C



Device top with ID and power button/LED indicator



Device base

Sensors

Temperature	Accuracy of sub 1°C (-10 to +125°C) NIST traceable
Accelerometer	Motion detection

Related Products

Loco Tags: P4B, P4P, E4B, E4BL, E4P, U4B
LocoTrack Devices

Certifications

ROHS, CE, PTCRB, FCC, IC, NOM, IFETEL