



Quick Start Guide

LocoTrack HGP4.



Introduction.

How the System Works

The LocoTrack HGP4 is a long life, non-rechargeable rugged device designed to track large assets over extended periods of time. The LocoTrack HGP4 is perfect for tracking machinery and equipment. With a low reporting rate, it can provide long-term data and raise alerts when unexpected movement or changes in environments occur.

The device has optional screw holes and mounting points for optional magnets (not supplied), it can be mounted to a multitude of assets.

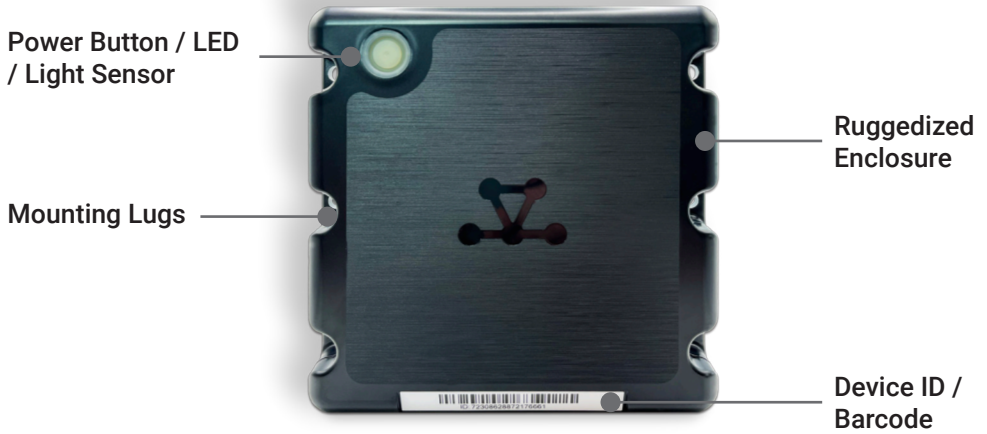
Installation and Asset Association

The LocoTrack HGP4 is pre-configured with default settings. All that is needed is to turn on the device and associate the device with the asset to which it is attached.

Each LocoTrack HGP4 has a unique identifier that is presented as a number and a barcode on its label. Association is completed by scanning this barcode and entering a name for the asset on the LocoAware platform.

Once associated, the LocoAware platform allows a user to search for a specific asset by asset name or by device ID.

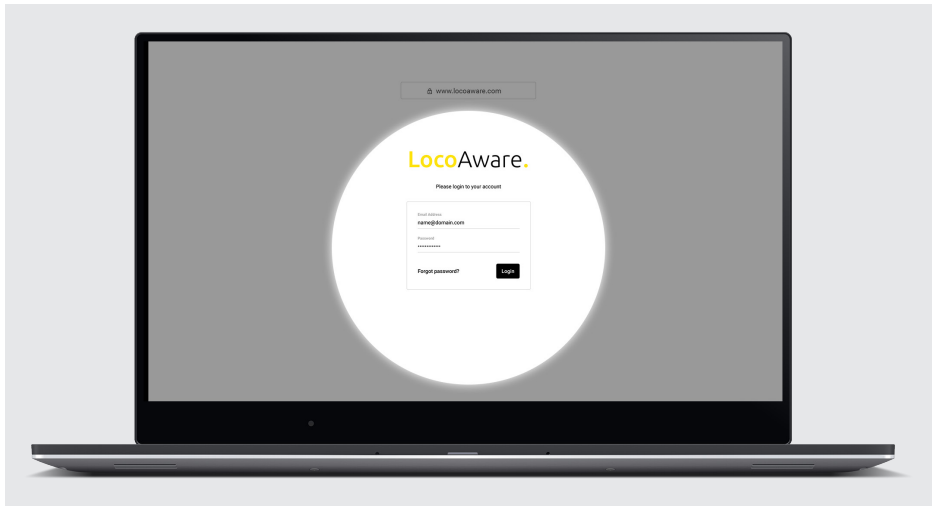
Device Characteristics.



Getting Started - at HQ.

Step 1

Access the LocoAware platform



Access LocoAware (www.locoaware.com) and login with the credentials provided to your company's administrator.

Step 2

Create device profiles

Create suitable profiles for how you intend to use your devices.



For help with creating device profiles, please see our Knowledge Base article here: <https://systemloco.zendesk.com/hc/en-us/articles/360017778920-Profiles>

Getting Started - in the Field.

Step 1

Turn on the LocoTrack HGP4



Note: The all-in-one Power Button/LED/Light Sensor are on the face of the device, (see image).

Press the Power Button to turn the device on. The LocoTrack HGP4 will gather and communicate data according to the profile that has been assigned to it.

Depending on how your administrator has configured the device's button behaviour; typically:

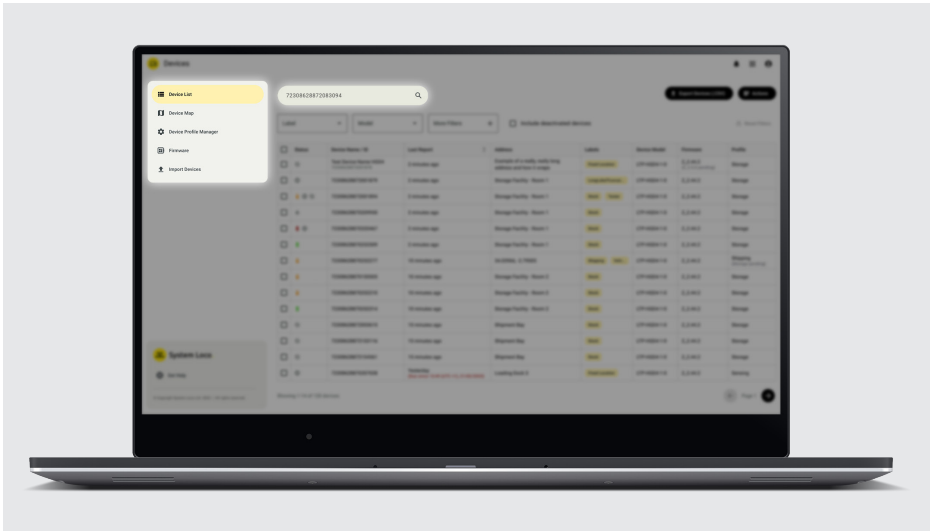
- a) A button press will cause the light to flash green to indicate that it is on
- b) If your administrator has disabled the button, no lights will flash

If the administrator has configured the button as an on-off toggle button:

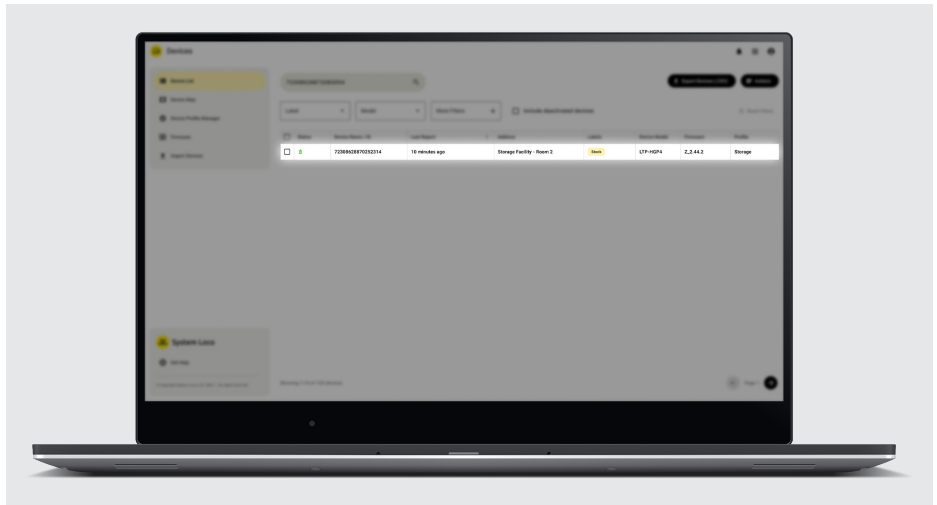
- a) Green indicates the device has been turned on
- b) Red indicates the device has been turned off

Step 2

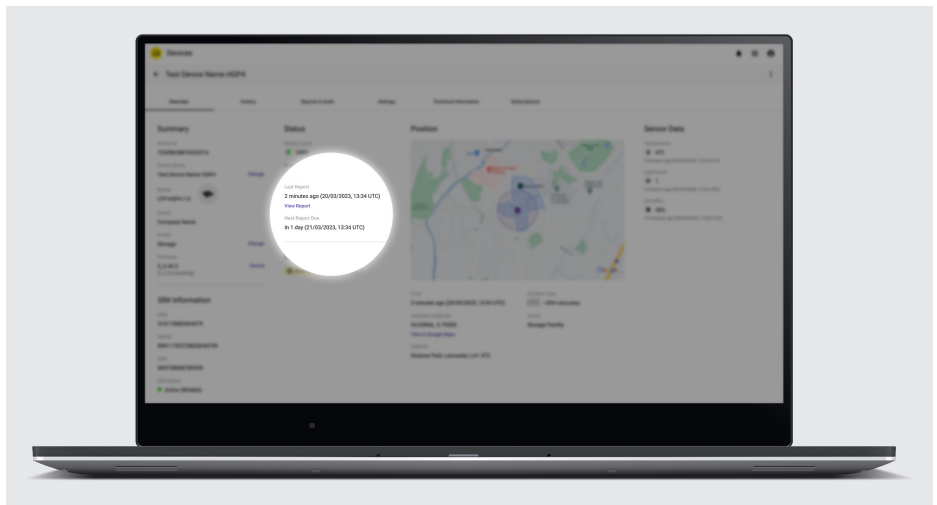
Confirm on LocoAware that the device has reported to the server



Find your device on www.locoaware.com by entering the Device ID / Barcode number into the search field.



Select the device from the list of search results.



Confirm that the last report time is current with the device's details page.

Step 3

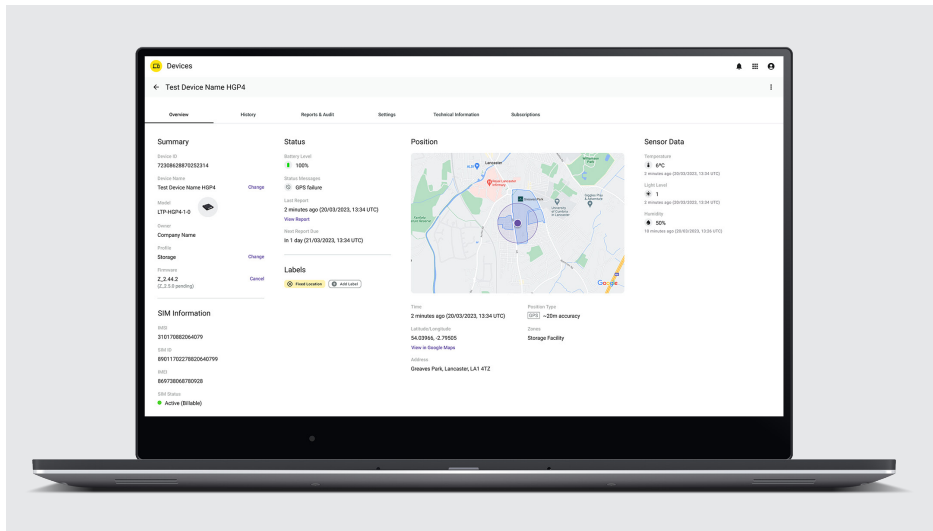
Attach the device to an asset




The LocoTrack HGP4 should be attached to the single asset that it was associated to during setup / asset association.

Step 4

Monitor the device



Monitor the device from within the LocoAware platform or via the API if integration has been completed.

 For information on API integration please visit:
<https://locoaware.com/apidocs/index>

Certifications.

Countries

This product has been certified to the following standards:

FCC, IC, MIC, NOM, ANATEL, UKCA, CE, ROHS, RCM, RAMATEL

Airlines

5C

Disposing of the LocoTrack HGP4.

The HGP4 is a single use device. After use, it can be disposed of according to your local environmental regulations for electronics products containing alkaline batteries. Please check with local authorities to ensure correct disposal.

Further Guidance.

For more help and information with the LocoTrack HGP4 or the LocoAware platform, please see our online Knowledge Base.

<https://systemloco.zendesk.com/hc/en-us>

Safety Statements.

FCC Rules and Industry Canada (IC) regulatory information

Compliance Statement (Part 15.19)

The equipment device complies with Part 15 of the FCC Rules. Operation is subject to the following two conditions: (1) This device may not cause harmful interference, and (2) This device must accept any interference received including interference that may cause undesired operation.

Warning (Part 15.21)

Changes or modifications not expressly approved could void the user's authority to operate the equipment. Manufacturer is not responsible for any radio or TV interference caused by unauthorized modifications to this equipment.

Compliance Statement (Part 15.105(b))

Note: This equipment has been tested and found to comply with the limits for a Class B digital device, pursuant to part 15 of the FCC Rules. These limits are designed to provide reasonable protection against harmful interference in a residential installation.

This equipment generates, uses and can radiate radio frequency energy and, if not installed and used in accordance with the instructions, may cause harmful interference to radio communications. However, there is no guarantee that interference will not occur in a particular installation. If this equipment does cause harmful interference to radio or television reception, which can be determined by turning the equipment off and on, the user is encouraged to try to correct the interference by one or more of the following measures:

Reorient or relocate the receiving antenna

Increase the separation between the equipment and receiver

Consult the dealer or an experienced radio/TB technician for help.

This device complies with Industry Canada license-exempt RSS standard(s). Operation is subject to the following conditions: (1) this device may not cause interference, and (2) this device must accept any interference, including interference that may cause undesired operation of the device.

Le présent appareil est conforme aux CNF d'Industrie Canada applicables aux appareils radioexempts de licence. L'exploitation est autorisée aux deux conditions suivantes:

(1) l'appareil n' doit pas produire de brouillage, et (2) l'utilisateur de l'appareil doit accepter tout brouillageradioélectrique subi, même si le brouillage est susceptible d'en compromettre le fonctionnement.

Class B digital device notice
"CAN ICES-3 (B)/NMB-3(B)"

RF Radiation Exposure Statement

This equipment complies with FCC radiation exposure limits set fourth for mobile transmitting devices operation in an uncontrolled environment. End users must follow the specific operating instructions to satisfy RF exposure compliance. The equipment should only be used where there is normally at least 20cm separation between the antenna and all persons/users.

This transmitter must not be co-located or operation in conjunction with any other antenna or transmitter.

Any changes or modification not expressly approved by the party responsible for compliance could void the user's authority to operate this equipment.

Mexico

"La operación de este equipo está sujeta a las siguientes dos condiciones: (1) es posible queeste equipo o dispositivo no cause interferencia perjudicial y (2) este equipo o dispositivo debeaceptar cualquier interferencia, incluyendo la que pueda causar su operación no deseada."

Taiwan

取得審驗證明之低功率射頻器材，非經核准，公司、商號或使用者均不得擅自變更頻率、加大功率或變更原設計之特性及功能。低功率射頻器材之使用不得影響飛航安全及干擾合法通信；經發現有干擾現象時，應立即停用，並改善至無干擾時方得繼續使用。前述合法通信，指依電信管理法規定作業之無線電通信。低功率射頻器材須忍受合法通信或工業、科學及醫療用電波輻射性電機設備之干擾。

電磁波警語：減少電磁波影響，請妥適使用。

A-GPS警語：為維護隱私權，請妥適使用。

